
T W E N T Y
TREVOR
P L A C E
L O N D O N S W 7



8



NEWLY REFURBISHED PERIOD HOUSE LOCATED IN THE HEART OF KNIGHTSBRIDGE

A charming mid terraced house in this central Knightsbridge location. The house has been imaginatively remodelled and interior designed to create a light and spacious contemporary home, with state-of-the-art technology and air conditioning. It offers a perfect balance of well proportioned reception space; excellent kitchen/breakfast room and a wonderful family/media room, as well as good family bedrooms.

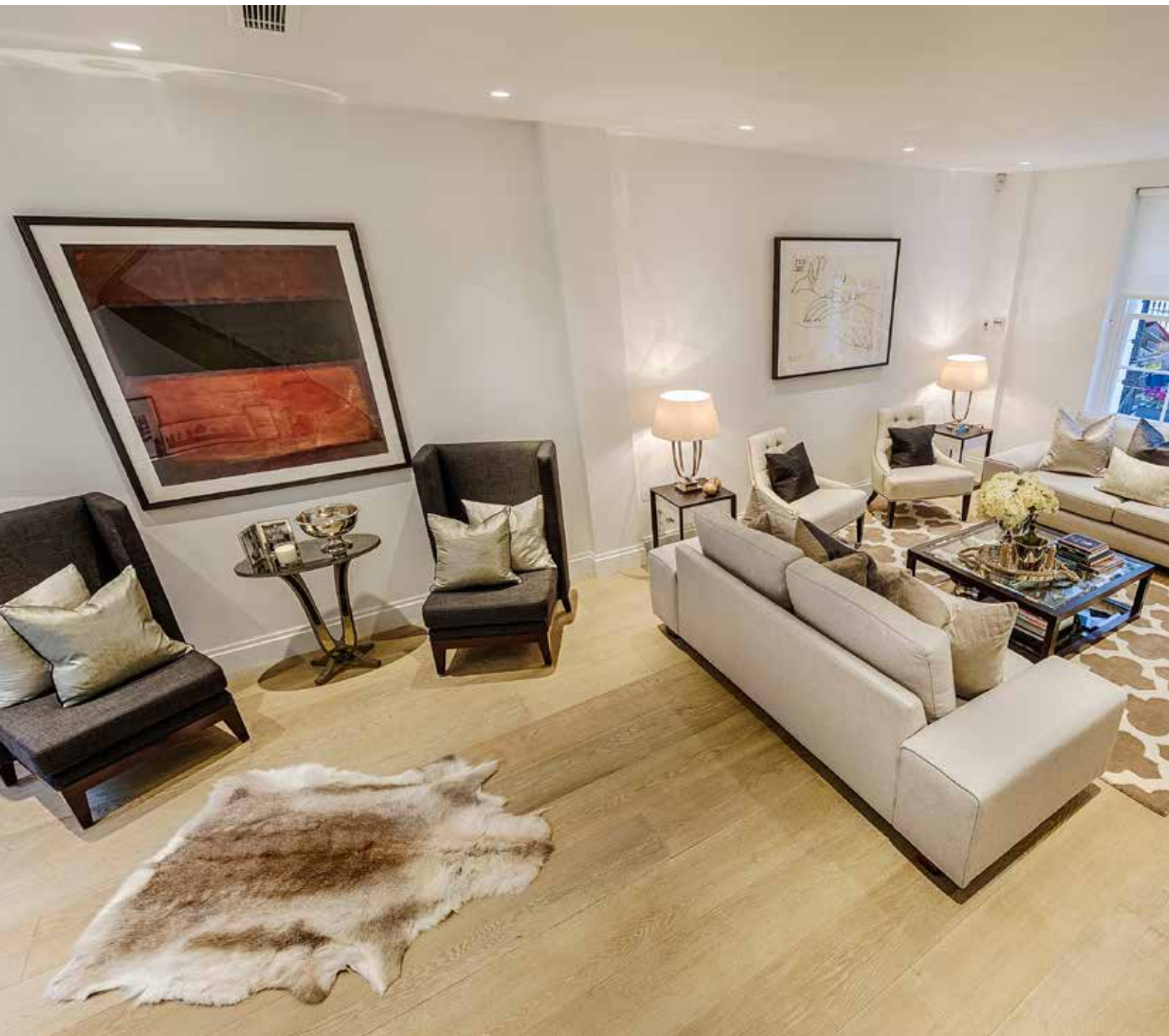
ACCOMMODATION

Drawing Room, Dining Room, Family Room, Study, Kitchen/Breakfast Room,
Master Bedroom with En Suite Bathroom, Bedroom 2 with En Suite Bathroom,
Bedroom 3 with En Suite Shower Room, Guest WC, Utility Room, Patio Garden.

HISTORICAL NOTE

Trevor Place was originally known as Hill Street and dates back to circa 1822 when W F Pocock began work on the replacement of Smith & Babers Floor cloth factory, which then stood towards the northern end of a large enclosure on the west side of the Trevor Estate.

In 1827 additional land was acquired and further houses were built enabling a roadway to be built at the top of Montpelier Square connecting it to Kensington Road (Knightsbridge).





SPECIFICATION SUMMARY

KITCHEN

- Individually designed kitchen by Poggenpohl in pebble white lacquered finish
- Gaggenau, oven, heated drawer, tall Fridge, tall Freezer, and tall Wine Cooler, all integrated
- Miele microwave, steamer and coffee machine, dishwasher, tumble dryer and washing machine
- Gas hob, by Bosch.
- Electronically controlled ducted extractor fan by Falmec
- Sink work surface and splash back in white Silestone
- Island worktop surface in special heat/stain resisting glass by Poggenpohl
- Feature LED lighting

BATHROOMS

- Walk in shower area with concealed chrome thermostatic shower mixer and a fixed shower head by Hans Grohe
- Modern bathtubs by Bette with wall mounted chrome bath spouts
- Luxury chrome heated towel rails by Zeta
- Vanity units and Recessed mirror fronted cabinets in all bathrooms
- Main Bathrooms (2) in large book matched marble slabs of the finest Statuario marble
- Top Bathroom in ceramic stone slabs
- Main bathrooms (2) with integrated high resolution colour Aquavision TVs
- Guest toilet in Glass mosaics with Silestone white vanity/worktop

HEATING AND COOLING

- Gas fired central heating by MegaFlow and hot water system.
- Under floor heating throughout with independent room thermostat controls
- Mitsubishi air conditioning units

ELECTRICAL AND HOME AUTOMATION

- Lutron Lighting Management with bespoke engraved light switches in enamel finish
- Control 4 Home Automation with Touchscreen Panels
- Multimedia Controller with Audio/Video installation in main rooms
- Installation for fibre broadband
- Sky + HD satellite Dish and radio antenna
- 60' Flat TV screen and Blue Ray in media/reception room
- LED Lighting throughout
- All electric plates and sockets in Enamel finish

FINISHES

- High gloss white doors by Shadbolt
- Solid Oak open tread staircase
- Smoked wide plank oak flooring in kitchen, living areas and study
- Handmade wool and silk carpets in all bedrooms
- Bespoke glass sliding wardrobe doors by Rimadesio, in all bedrooms

SECURITY

- Insurance approved comprehensive burglar alarm system
- High resolution colour CCTV cameras at the rear and front of the property
- CCTV cameras are fully interfaced with the audio visual system
- Smoke alarms hardwired to mains supply with battery back up

GENERAL

- Six telephone Lines and 16 extension Panasonic telephone system throughout
- Internal and external walk-on glass rooflights by "Sunsquare"
- Patio and planters covered in Jura Limestone slabs
- Specialist wooden trellis by "The garden trellis Company"



Hyde Park Corner



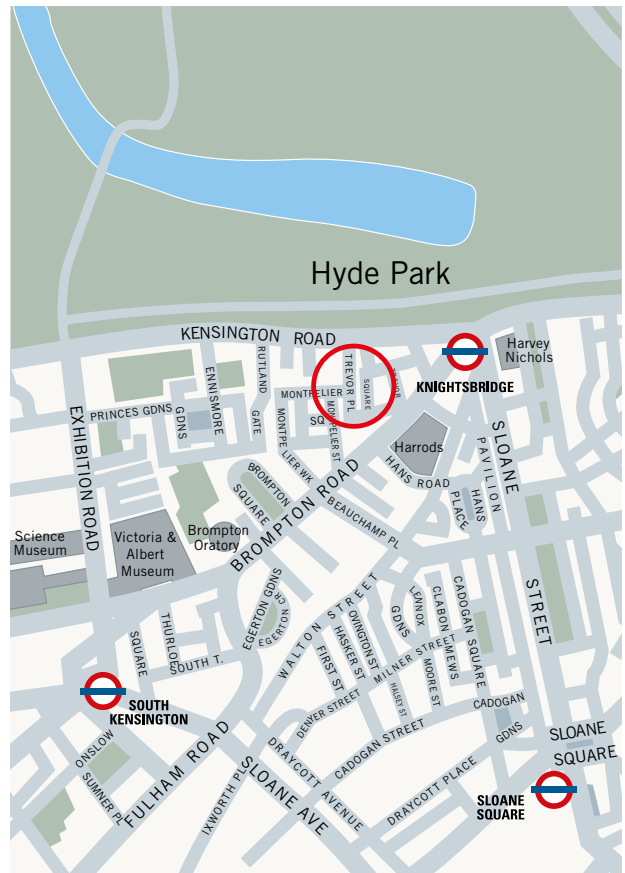
Harvey Nichols



Harrods

LOCATION

Knightsbridge is arguably London's premier residential area and is enhanced by many world class shops, hotels and restaurants. The area is rich in historic and cultural landmarks, museums, galleries and theatres. Trevor Place is located approximately 0.5 miles from Hyde Park and approximately 0.3 miles from both Harrods and Harvey Nichols.



TERMS

TENURE: FREEHOLD

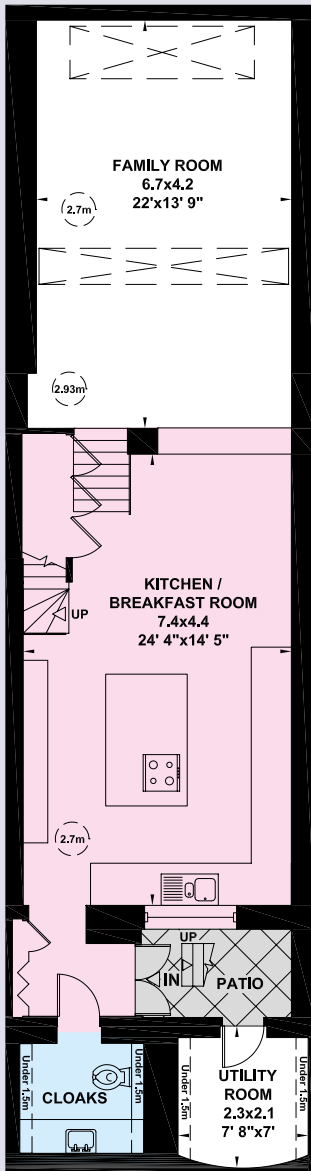
PRICE: UPON APPLICATION

LOCAL AUTHORITY: CITY OF WESTMINSTER

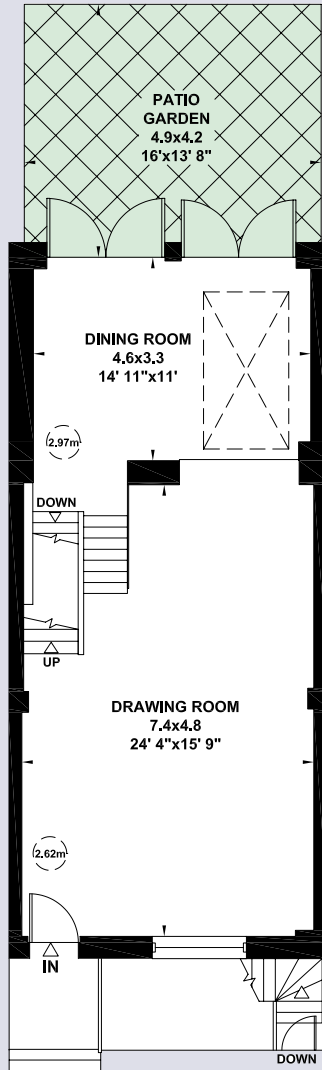
GROSS INTERNAL AREA (APPROX.)

239 Square Metres (2,569 Square Feet) Including Utility Room and Under 1.5m High

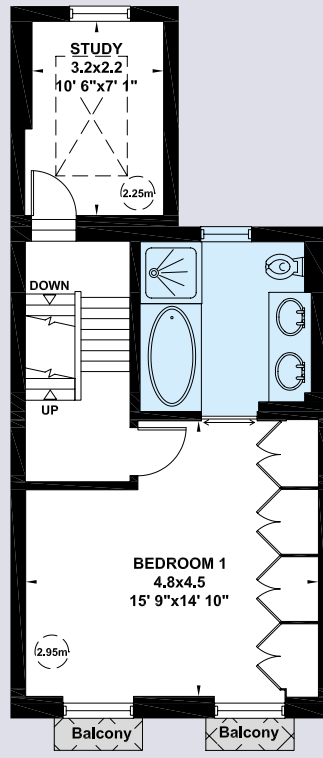
233 Square Metres (2,502 Square Feet) Excluding Utility Room and Under 1.5m High



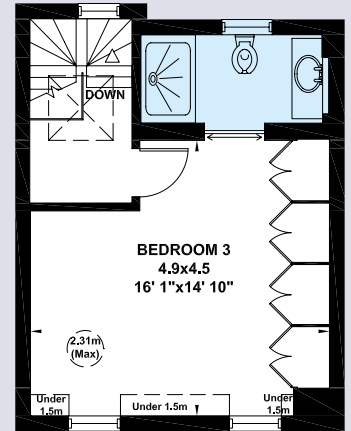
LOWER GROUND FLOOR



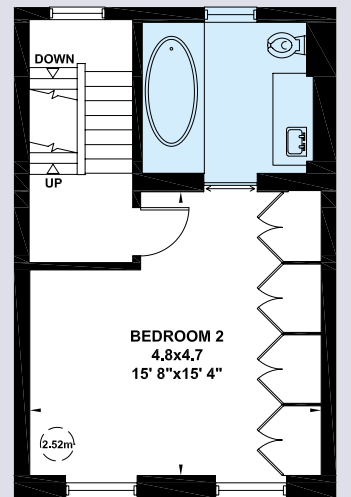
UPPER GROUND FLOOR



FIRST FLOOR



THIRD FLOOR



SECOND FLOOR



VIEWING: Strictly by appointment with Savills.

IMPORTANT NOTICE

Savills, their clients and any joint agents give notice that: 1: They are not authorised to make or give any representations or warranties in relation to the property either here or elsewhere, either on their own behalf or on behalf of their client or otherwise. They assume no responsibility for any statement that may be made in these particulars. These particulars do not form part of any offer or contract and must not be relied upon as statements or representations of fact. 2: Any areas, measurements or distances are approximate. The text, photographs and plans are for guidance only and are not necessarily comprehensive. It should not be assumed that the property has all necessary planning, building regulation or other consents and Savills have not tested any services, equipment or facilities. Purchasers must satisfy themselves by inspection or otherwise. 02/14 NDK 308818

Savills Sloane Street
 ndekeyzer@savills.com
 020 7730 0822

Savills Knightsbridge
 knightsbridge@savills.com
 020 7581 5234

savills.co.uk

